

# The Electrifier

Visit us at: [www.frenchbroademc.com](http://www.frenchbroademc.com)

Outlet Ads and Manager's Report are Online

MAY 2011

"Owned by those we serve"

MARSHALL, NC

## May is National Electrical Safety Month

In the U.S., home electrical problems annually cause more than 51,000 fires, resulting in more than 490 deaths, 1,400 injuries, and \$1.3 billion in property damage, according to the National Fire Protection Association. Statistics from the U.S. Consumer Product Safety Commission show that nearly 400 people are electrocuted in the United States each year.

This year, ESFI is focusing on the electrical safety of a different area of the home each week during May:

**Week 1 – Cooking Up Safety in the Kitchen** The kitchen is the heart of the home. It's where families gather to cook favorite recipes, share warm meals, and reconnect with each other, but it's also the location where two-thirds of all home fires start. Identify and correct potential hazards in your kitchen before someone gets hurt.

### **Safety Tip:**

Keep your stove and oven clean. Clean the exhaust hood and duct over the stove regularly.

### **Energy Saving Tip:**

A toaster oven uses 1/3 as much energy as a full-sized oven. Use toaster ovens for cooking small meals.



**Week 2 – Plug Into Safety in Your Family Room** The family room is an area of the home where many people go to unwind and relax, but there are certainly a lot of appliances powered there. According to the Consumer Electronics Association, the average home today has three televisions, two DVD players, at least one digital camera, one desktop computer and two cell phones. Many homes and their electrical systems were built before most modern-day home electronics and appliances were even invented. Learn to recognize and eliminate potential electrical hazards that can exist in common areas of your home.

### **Safety Tip:**

Make sure entertainment centers and computer equipment have plenty of space around them for ventilation.

### **Energy Saving Tip:**

Use a power strip as a central turn off point for electronics, video games, and computers when not in use.



**Week 3 – Wake Up to Safety in the Bedroom** The average adult sleeps almost 8 hours per night, spending at least one-third of every day in their bedroom. Unfortunately, we are often at our most vulnerable while asleep. Thirty-six percent of people killed in home fires never wake up. Take steps to make sure your bedroom is safe—you'll sleep better!

### **Safety Tip:**

Before installing a portable air conditioner, make sure that the electrical circuit and the outlet are able to handle the load.

### **Energy Saving Tip:**

If you have a portable air conditioner, turn it off when a room will be vacant for a few hours.

You'll use less energy cooling the room down later than if you had left the unit running.



**Week 4 – Build a Foundation of Safety in the Basement** The basement is one of the most commonly ignored areas of the home. Yet, it is also where some of your most essential—and expensive—home electrical equipment is kept. Heating equipment and electrical distribution systems are two of the leading causes of home fires. You can help keep your home safe by learning the basics of how these systems work and making sure they are properly maintained.

### **Safety Tip:**

Check the label inside the door or cover of your electrical service panel to see when your electrical system was last inspected.

### **Energy Saving Tip:**

Heating can account for 40% of your annual household energy costs! Keeping your furnace well-maintained can increase its efficiency by more than 10%.



The Electrical Safety Foundation International (ESFI) is a 501(c) (3) organization dedicated exclusively to promoting electrical safety. ESFI proudly sponsors National Electrical Safety Month each May, and engages in public education campaigns throughout the year to prevent electrical fires, injuries, and fatalities. To learn more about ESFI and National Electrical Safety Month, visit <http://www.electrical-safety.org>.

# MANAGER'S REPORT



Jeff Loven

## Challenges Facing Future Energy Demands

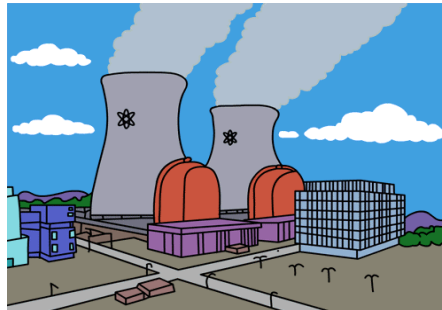
**E**ven though the economy remains slow, energy demands continue to rise due to adverse weather patterns, population growth, and business expansion. Planning for this additional electrical load is a difficult task as there are many challenges to meet our future energy needs. Concerns over global warming and air pollution have all but eliminated the addition of new coal-fired electrical generation plants. In fact, many of the existing plants are now scheduled for retirement in the near future due to the additional costs associated with making them compliant with the new laws and regulations. Retiring these plants will reduce the amount of base load generation and will have to be replaced with another type of reliable, dependable generating facility.

**N**uclear power seemed to be the leading candidate to fill our future energy requirements and to become a substitute for the older coal generation units until the earthquake and tsunami wave struck Japan in March. The damage to Japan's nuclear power facility has caused great concerns throughout the world as to the future of nuclear power. While the radiation levels have not reached the catastrophic levels found at the Chernobyl meltdown in 1986, they are high enough that a 20-mile radius around the plant has been evacuated. The containment vessels seem to have done their job so far but who knows what the long term effects will be.

**T**he design and construction of

any new nuclear plant will now undergo more stringent tests and requirements, which could delay new construction and elevate costs substantially.

Plants that are currently in operation will also be scrutinized and may have more requirements placed upon them to the point to where it may be more cost effective to retire the plant than to bring it up to new compliance standards.



**W**ith so much red tape, delays and uncertainty in the area of Nuclear Power, most utilities are turning more and more to natural gas turbines, which seem to be more accepted by the general public due to lower pollution emission levels compared to other types of base load generation. Natural gas plants are also less expensive to construct and can be built much faster than other types of base load generators. The biggest issue that surrounds natural gas generation is the volatility of the fuel costs. While natural gas is said to be plentiful in the United States at

the moment, there is a growing concern that, as our nation becomes more dependent on a single fuel source for the majority of its electrical production, the cost will increase. History has already shown that natural gas prices can vary greatly depending on the season and demand. All this will continue to drive energy costs up for us as consumers.

**Y**our Board of Directors constantly monitors the issues surrounding power generation and costs. Power cost is by far the biggest expense we have and we want to make sure we are getting the lowest cost without sacrificing reliability. We are also investing in several energy-efficiency projects to help our members lower their usage and reduce the amount of energy that we must purchase. We are becoming more active with renewable generation as we continue to connect solar and wind powered systems to the French Broad EMC electrical grid. This spring, French Broad EMC will connect another solar-energy system installed at Madison High School that will produce 47,000 kilowatt hours annually. We also recently signed an interconnection agreement with Buncombe County that will add a 1.5 megawatt methane generation facility to our system this summer.

**S**olutions for our future energy needs are complex but French Broad EMC and your Board of Directors continue to look for creative, efficient and cost-effective ways to meet all your electrical needs.

**About Electricity**

Electricity is a vital resource North Carolinians depend on daily, but when used unsafely, the consequences can be costly and lethal. According to the North Carolina Department of Insurance, 3,250 electrical source fires caused \$25.3 million in damages to homes within the state in 2004.

Nationally, U.S. Consumer Product Safety Commission statistics report that on average, at least one U.S. citizen dies every day in electrical-related fires or accidental electrocutions in their own home. Many of these tragedies involve common items such as power outlets, appliances, power cords, power equipment and extension cords. Sadly, most of these deaths and injuries were preventable.

To help reduce electric safety casualties and injuries, North Carolina's cooperatives are dedicated to raising awareness of electric safety information to educate people of all ages on the dangers of electricity.

Start by better understanding how electricity powers your homes and businesses.

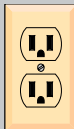
North Carolina Association of Electric Cooperatives

French Broad EMC offices  
will be closed  
Monday, May 30th  
in honor of



Remember the men and  
women in our  
Armed Forces as they serve  
around the world.

*When submitting ads for The Outlet, please be sure to include your name, address, phone number and account number. Ads without this reference information are subject to not being published.*



The  
**Outlet**

All numbers are in 828 area code unless otherwise listed.

This is a **FREE** service to members for advertising non-commercial items. **Ads are limited to two items per member per month and will appear only one time unless resubmitted.** We reserve the right to edit, condense or refuse ads due to content, unreasonable length or available space. French Broad EMC does not endorse services advertised and is not responsible for reliability of services listed.

Mail ads to French Broad EMC, Attn: Paula Seay, PO Box 9, Marshall, NC 28753-0009.

**FOR SALE**

**3BR/2BA** 2-story house, 2 ac, Beech Glen comm, built green, \$160,000. 301-1559.

**1988 Ford Bronco II.** 689-2871.

**1984 Crown Vic LTD**, auto, FWD, \$1,500 OBO, no calls on Sun. 385-2163

**65" TV**, RCA, 2001 Gemstone Plus, \$1,500 OBO. 385-2163

**2BR/2BA** house, full bsmt, near Burnsville, \$195,000. 645-0182 or 779-8174.

**7 Acres**, wooded, N Toe River, \$10,000 per acre. 675-0267.

**4-Horse Trailer**, 727 SunLite, dressing room, finished, \$21,000. 656-2437.

**1985 ElCamino.** 622-9391.

**1½Acre**, camper, pontoon & barn, Jefferson City, TN, \$40,000. 689-4455.

**Barn Lumber.** 682-6863.

**2 Men's Bikes**, \$100/both. 545-0251.

**Riding Mower**, New Holland CF274, 3 cyl, diesel, 4x4 auto, \$6,500. 208-1599 or 682-6706.

**Pit Bull.** \$300 OBO. 680-1013.

**Graco PlayYard**, walker, booster seat & more, \$75. 765-6087.

**Suspension Kit** for older pickup/van/SUV, Loadmaster, \$80. 675-5785.

**Riding Mower**, John Deere, 12.5 HP, \$250. 704/433-0746.

**Generator**, 500watt, \$400. 704/433-0746.

**Pit Bull/Lab.** \$100 OBO. 680-1013.

**Bushhog**, 4-wheeler pull behind, MH, \$400. 864/978-1757 or 505-8095.

**1973 Bomber Fish/Ski Boat**, 60 Johnson motor, \$1,000. 864/978-1757.

**2006 GMC Sierra** 3500 SLT, dually, diesel, 4x4, crew cab, 33,300mi, \$35,500. 688-2026.

**Truck Tool Box**, Husky mid-size, \$300 OBO. 423/202-8231.

**Circle Sawmill**, 671 Detroit diesel motor, live log deck, log turner. 423/743-8888.

**Pinball Machine**, 1975 Williams Toledo, restored, \$750 OBO. 284-2575.

**Queen Excluders.** \$5/ea. 645-2704.

**1 Acre**, Brown's Creek. 675-0647.

**Riding Lawn Mower**, John Deere L120, auto, 20hp, V-Twin 221H, 48" deck, \$750. 649-3823 after 6pm.

**2002 Harley Davidson** 1200 Sportster, black, 4,900mi, \$5,250. 689-8428.

*The*  
**Electrifier**

Published monthly by French Broad EMC,  
PO Box 9, Marshall, NC 28753-0009.

Jeff Loven                      General Manager  
Rick Thomason              Assistant Manager  
Tracy Evans                  District Manager  
Paula Seay                      Editor

**Board of Directors**

Joe Justice                      President  
Bill Riddle                      Vice-President  
John Chandler                  Secretary  
Gary Wilde                      Treasurer  
Warren Buchanan, Dan Quinn,  
Carl Ramsey, Gordon Randolph,  
Jimmy Ray, Earle Wise, Keith Kuhne

**FBEMC Offices**

Marshall                      (828) 649-2051  
Toll-Free to Marshall      1-800-222-6190  
Burnsville                      (828) 682-6121  
Bakersville                      (828) 688-4815

**To Report A Power Outage After Hours  
Marshall District**

(Madison, Buncombe & Unicoi Counties)  
(828) 649-2051 • 1-800-222-6190

**Burnsville-Bakersville District**

Yancey County              (828) 682-6121  
Mitchell County              (828) 688-4815



Online Credit Card Payment  
Available 24 Hours a Day  
for VISA or MasterCard  
**1-866-644-7953**

**Refrigerator**, GE profile side-by-side, white, \$250. 689-8428.

**Lawn Tractor**, John Deere 36" cut, auto, \$250. 688-9650.

**China/Buffer Cabinet**, Ethan Allen, cherry, glass shelves, mirrors, \$1,000. 688-9955.

**2008 Chev Impala**, 4dr, LT-1, coll edition, leather, 28k mi, \$16,000. 688-1065 8am-5pm.

**1995 Volkswagon Eurovan Camper**, 115,000mi, \$13,500. 689-8946 or 813/966-1957.

**Riding Mower**, Snapper, elect start, \$300. 320-9165.

**Springfield MIA** super match, 308 cal, scope mount. \$1,450 OBO. 678-0107.

**2002 Chrysler Town & Country**, leather, 40,128mi, \$9,500 OBO. 688-4486 or 467-2249.

**2002 Mustang GT**, auto, ltd, 50k mi, \$8,500. 688-4486 or 467-2249.

**Kayak**, Old Town Canoe, rainbow tie-dyed, \$150. 678-9511.

**1400 Sq Ft Siding**, rough sawn cedar shake, \$2,800. 678-9511.

**2 BR/1 BA** wood-framed cottage, approx 800 sq ft, deck, near Mars Hill, reasonable cash offer. 407/267-0733.

**Car Seat**, Century, baby, blue, \$40. 645-4359.

**Drawing Desk**, 18Wx33Hx35L w/ 2 storage areas, \$40. 645-4359.

**3 BR/1 1/2 BA** farm house on 1.14 ac, garage, workshop, fruit trees, Buladean, \$149,000. 688-1115.

**3.16 Acre Lot**, ready to build, water, septic, Cattail, \$60,000. 786/218-3249.

**1992 Dutchman Camper**, 20ft, fully furn, \$4,500. 649-0002.

**1996 Seadoo XP**, 2-seater, yellow w/ trailer, \$2,000 OBO. 649-0002.

**Kingwood Stove**, 2007B, 40k BTU, 6" flu, up to 28" logs, \$600. 680-9250.

**2007 Park Model RV**, 44', 40' porch, perm covered, \$29,900, \$1,540/yr. 352/396-9797.

**4 BR/2 1/2 BA** log home, 0.80 ac, 2400 sq ft open floor plan, near Mars Hill. 561/212-1455 or [WGL811@bellsouth.net](mailto:WGL811@bellsouth.net).

**Go-Kart**, Carter Talon GX150IIR 2-seat w/ seat belts, 150CC, \$1,200. 649-2417 after 5 pm.

**Vinyl Gutters**, white, downspouts/elbows/brackets, \$100. 688-1144.

**Log Home** on 30+/- ac, views, poss add'l home sites, near App Trail. 768-3408.

**Reloading Kit**, Lee 50<sup>th</sup> Anniversary, no dyes/powders/primers, \$125. 206-1140.

**Shade Cloth**, large. 682-4029.

**(2) Guns**, 1-20 ga bolt action w/ modified choke; 1-410 bolt action, \$150/both OBO. 284-7344.

**1973 Volkswagon conv**, red, \$5,500. 284-7344.

**Canning Jars**. 675-4271.

**Boys Clothes**, size 6-14. 675-4271.

**2000 GMC 6500**, gas, 5spd, wood chip dump, 47,000mi, \$11,000. 649-2613 or 206-1613.

**1971 Volkswagon Bug**, auto, 4spd, \$1,500. 649-2613 or 206-1613.

**Sofa Bed**, navy blue, queen, \$150. 675-0540 or 847/401-4007.

**Antique Pedestal Sink**, porcelain w/ copper hardware, \$100. 675-0540 or 847/401-4007.

**Great Pyrenes Puppies**, born 4/11/11, \$200, will take dep. 683-3261.

**Bounce House**, 8 ft, \$75. 284-5411.

**Locust Fencing**, 7 ft, \$5 ea. 284-5411.

**5.765 Acres**, Pigeon Roost comm. 954/786-9188.

**Colorado Blue Spruce** trees, 3'-5', you dig. 688-2649.

**Sofa & Chair** w/ ottoman, solid wood, cream, \$500. 689-4486.

**Wheel Chair**, electric, \$950. 689-4486.

### WANTED

**Metal Detector**. 689-5740.

**Judge Handgun**. 689-5740.

**Roommate** for 3BR/2BA home, Mars Hill, no smoking/drugs, 6-12mo term, \$500/mo+\$350 dep, now avail. 305/283-4552.

**Standing Timber**. 683-3918.

**Hay Bales**, moldy, Marshall. [generalmitchell2001@yahoo.com](mailto:generalmitchell2001@yahoo.com).

**Tutor** for GED test. 649-8044.

**Book**, "Me and My Likker" by Popcorn Sutton. 682-3287.

**Block Layer. Electric Cement Mixer**. 712-8507.

**Standing Timber**. 337-8942.

**Pickup Truck**, small, 2WD, low mileage, late model. 683-0430.

**7-Pedal Steel Guitar**. 683-0430.

**Old Buildings** to tear down. 208-0295 or 682-6863.

**Monitor Heater**, model 441. 678-0846.

**Junk Cars**, will pay. 689-5125.

**Riding Lawn Mowers** that do not work, must be free. 689-9617.

**Radios**, 1920s-1950s Wooden & Bakelite. 386/295-3227 or [k4jyx@amsat.org](mailto:k4jyx@amsat.org).

### MISCELLANEOUS

**Concert**, Harris Brothers, May 21<sup>st</sup>, 8pm, Madison Co Arts Ctr, \$15. 649-1301 or [www.madisoncountyyarts.com](http://www.madisoncountyyarts.com).

**Found Art & Fashion Show**, June 4<sup>th</sup>, 6-8pm, Madison Co Arts Ctr, Free. 649-1301.

**Bluff Mountain Festival**, June 11<sup>th</sup>, 10am-8pm, Hot Springs Spa grounds, Free. 649-1301.

**For Rent: 3 BR/2 BA**, near MHC, 6 mo lease min, \$750/mo+dep. 301-1559.

**For Lease: 5.3 Acres**, bottom land, water, state road access, Pensacola. 682-3646.

**Will Haul Trash** for scrap metal. 545-0251.

**Free Fill Dirt**, must haul, Madison Co Bd of Ed. 649-9276.

**Farmers & Artisans Market**, every Sat, 9am-1pm, MHC. [www.marshillmarket.org](http://www.marshillmarket.org).

**Living Healthy Workshop**, June 1<sup>st</sup>, 9am, Blue Ridge Fitness Ctr, Yancy Co, Free. 682-6011 ext 15.

**Adult Co-Ed Softball**, fall league, Madison Co Parks & Rec. 649-3635.

**For Rent: 3 BR/2 BA**, fully furn w/all app, ref req, Red Hill comm., \$500/mo+dep. 688-1065.

**Will Sit** w/ elderly & homebound, nts/wk days/wk ends, Marshall, MH, Wvle. 689-8421 or 380-9081.

**Lawn Care**, odd jobs. 768-7355.

**Computer Repair**, upgrades, free est, Marshall. 649-0317.

**Furniture Refacing**. 675-8001.

**Lawn Service**, weedeating, mowing. 678-9861.

**Will Clean**. 206-2474 or 776-2085.

**Great Pyrenes**, 3 yrs old male, raised w/ children, Free. 675-0192.

**Will Haul** mulch, gravel, dirt. 675-4003.

**Chair Caning**. 689-5125.

**Fencing**, barbed wire, split rail. 284-1232 or 675-4540.

**For Rent: 2 BR** house, workshop, pet friendly, Green Mountain, \$650/mo. 518/663-8235.

Deadlines for submitting ads or notices to *The Electrifier*.

June issue May 15

July issue June 15

August issue July 15