

# The **Electrifier**

Visit us at: [www.frenchbroademc.com](http://www.frenchbroademc.com)

Outlet Ads and Manager's Report are Online

**NOVEMBER 2011**

*"Owned by those we serve"*

**MARSHALL, NC**

## **Holiday Cooking Safety**

Preparing a complex holiday meal can be chaotic, especially when you're surrounded by distractions, as many of us are during the holidays. This year, take a few minutes to learn some kitchen safety tips to ensure a safe, joyful and scrumptious holiday season:

- To prevent kitchen fires, never leave any pot or pan on the stove unattended.
- Keep anything that can catch fire (potholders, oven mitts, wooden utensils, paper or plastic bags, food packaging, towels or curtains) away from the stovetop.
- Keep a fire extinguisher in your kitchen, but not near the stove. Consider keeping a fire extinguisher by the kitchen door. That way it is visible and accessible.
- Read and familiarize yourself with your fire extinguisher's directions for use before there's a fire.
- Inspect your fire extinguisher at least once a month. Make sure the pressure is at the recommended level (the needle should be in the green zone), the nozzle and other parts are not damaged, the pin is intact and there are no visible signs of damage. Some manufacturers recommend shaking your dry chemical extinguishers once a month to prevent the powder from settling/packing
- Always keep an oven mitt and lid nearby when you're cooking. If a small grease fire starts in a pan, smother the flames by sliding the lid over the pan (make sure you are wearing the oven mitt). Turn off the burner. Do not move the pan. To keep the fire from restarting, leave the lid on until the pan is completely cool.
- If there is a fire in your microwave oven, turn it off immediately and keep the door closed. Do not proceed to open the door until the fire is out. If possible, unplug the appliance if you can reach the outlet safely.
- Check your appliances on a regular basis to make sure they are unplugged.
- Never overload outlets when cooking.
- When children are around, be sure to use the back burners on your stove top as much as possible to prevent burns.



The holiday season is meant to be a festive time spent with family and friends. Practice safe cooking techniques during this special time to protect yourself and your loved ones.

**In observance of the  
Thanksgiving holidays,  
FBEMC offices  
will be closed**

**Thursday and Friday  
November 24th & 25th**



### **Contact Information** (please complete, cut and return)

Name on Account \_\_\_\_\_

Account # \_\_\_\_\_ CIN# \_\_\_\_\_

Mailing Address \_\_\_\_\_  
\_\_\_\_\_

Home Phone # \_\_\_\_\_

Cell Phone # \_\_\_\_\_

Email Address \_\_\_\_\_

(we would like to update your contact information for situations in which we might need to contact you, such as: outage updates, past due notifications, capital credit issues, etc.)

## Manager's Report



Jeff Loven

### Rural Distribution Line Air Lifted

There is little doubt that French Broad Electric provides electric service to some of the most beautiful and challenging terrain in the Eastern United States. We live in an area that is uniquely beautiful, especially this time of year, when the leaves change colors and decorate our mountain landscape. The mountains that surround us are not only appealing to the eye, but typically offer us protection from severe weather, as major hurricanes and tornados tend to be weakened or entirely dissipated by the time they reach our area.

At the same time, constructing and maintaining an electrical distribution network can be very difficult in our service territory. Many of our power lines traverse through mountainous terrain that is inaccessible by truck. Maintaining these lines is challenging but necessary in order to provide reliable electric service. One great example is the three phase line we have that serves the communities of Upper and Lower Shut-In in North Western Madison County. From an electrical standpoint, this community of around 400 customers is on an island. FBEMC only has one line to provide these communities electrical service and this line travels from Spring Creek through National Forest Service lands via an area known as the Gorenflo Gap. The power line through this area is approximately three miles in length and traverses along the sides

of the mountains, thus making it impossible to get our trucks anywhere near these lines.

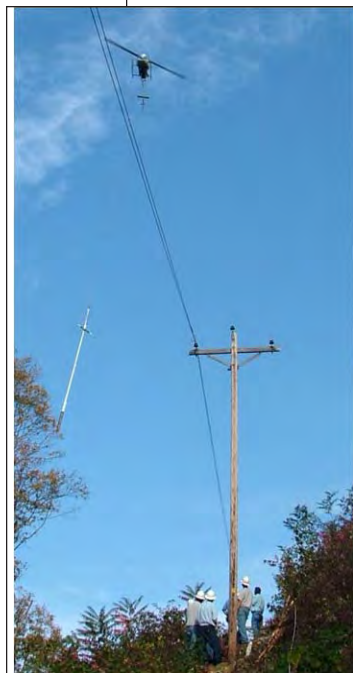
This line has been in service for over 60 years now and has required very little maintenance up to this point. This past spring, when we cleared the right of way, we also inspected the poles and found several that were showing their age, many of which had significant signs of bear damage. We knew that replacing these poles would be extremely difficult and time consuming. The biggest challenge would be simply getting the new poles to the old pole and dragging the poles in by hand would be time consuming, would require a tremendous amount of manpower, and would be dangerous.

Based on previous experience and success, we decided to

change these 12 poles with the aid of a helicopter. In advance of setting the poles, our crew went into the area, dug the holes and covered them so that nothing could fall into the hole. The plan was to wait for the appropriate weather conditions, station a crew at each hole, de-energize the power line, set each pole, move the wires, and then restore service as quickly as possible.

We decided to implement this plan over a two day period so that we could station a crew at each pole. This assured that we could get the poles set, the wires moved, and electrical service restored in a timely fashion and have some time if something did not go as planned. On the first day, the crews set six poles and had all the assemblies changed out in about three hours and electrical service was restored around lunch time. On day two,

the other six poles were to be changed out. These were more in more remote terrain and took our crews longer to get their tools into each site due to the long hike but they managed to change these poles out in less than four hours of outage time. It was an impressive display of coordination, modern technology, determination and hard work on our crew's part. This job validated that we serve some of the most difficult areas in the United States, while proving our crews can handle the challenge and do a great job in maintaining our electric grid.



**Interested in Installing  
a Renewable Energy System  
such as Solar, PV, Wind Turbine or Hydro  
Generator  
at your home or business???**

**If so, please contact Sam Hutchins at  
828/649-2051 or  
[sam.hutchins@frenchbroademc.com](mailto:sam.hutchins@frenchbroademc.com)**

**Contacting French Broad EMC initially  
could help you avoid some possible pitfalls.**

**New Billing Option**  
We now offer electronic billing (E-bill), an option that allows you to receive your bills in email form. This billing option requires that you have a valid e-mail address and that you notify FBEMC, should you have a change in your e-mail address.

When you sign up for this service, you will no longer receive a paper bill in the mail. You will receive an e-mail from FBEMC and you can access your bill through the link in the e-mail and you can access the newsletter, *The Electrifier*, on our website.

Please keep in mind that you will be responsible for making prompt payments and when making payments, you must always have your account number and CIN number as a reference for your payment.



The  
**Electrifier**

Published monthly by French Broad EMC,  
Box 9, Marshall, NC 28753-0009.

Jeff Loven                      General Manager  
Rick Thomason              Assistant Manager  
Tracy Evans                  District Manager  
Paula Seay                      Editor

**Board of Directors**

Joe Justice                      President  
Jimmy Ray                      Vice-President  
John Chandler                  Secretary  
Gary Wilde                      Treasurer  
Warren Buchanan, Keith Kuhne,  
Dan Quinn, Carl Ramsey,  
Gordon Randolph, Bill Riddle,  
Earle Wise

**FBEMC Offices**

Marshall                      (828) 649-2051  
Toll-Free to Marshall      1-800-222-6190  
Burnsville                    (828) 682-6121  
Bakersville                  (828) 688-4815

**To Report A Power Outage After Hours  
Marshall District**  
(Madison, Buncombe & Unicoi Counties)  
(828) 649-2051 • 1-800-222-6190

**Burnsville-Bakersville District**

Yancey County              (828) 682-6121  
Mitchell County              (828) 688-4815



**Online Credit Card Payment  
Available 24 Hours a Day  
for VISA or MasterCard  
1-877-768-4860**



The  
**Outlet**

**All numbers are in 828 area  
code unless otherwise listed.**

This is a **FREE** service to members for advertising non-commercial items. **Ads are limited to two items per member per month and will appear only one time unless re-submitted.** We reserve the right to edit, condense, or refuse ads due to content, unreasonable length, or available space. French Broad EMC does not endorse services advertised and is not responsible for reliability of services listed.

Mail ads to French Broad EMC, Attn: Paula Seay, PO Box 9, Marshall, NC 28753-0009.

**FOR SALE**

**4BR/2½BA** log home on 0.80 ac, near MH, poss fin, \$259,500. 561/212-1455.

**Trailer**, 16' tag along. 688-2068.

**Doublewide** on 1 ac, views, \$20k down +\$730/mo. 689-5740 or 273-8565.

**2 BR/1 BA** house on 1 ac, Marshall, \$55,000. 649-2875.

**1990 Cutlass**, 1-owner, \$1,100. 649-2875.

**2BR/2BA** 1998 mobile home on 3.7 ac, FlagPond, \$65,000 OBO. 330/402-0898.

**1986 Subaru** Brat, good for parts, \$300 OBO. 208-3610.

**Firewood**, mixed, delivered & stacked, \$65+gas. 678-9422 or 284-0611.

**Hay Baler**, New Holland 273, square, MF pick up rack, \$1,000. 688-3540.

**ATV** Honda 400 Foreman 4x4, winch, 1 owner, \$2,100. 689-2348 or 778-4903.

**Mower**, Toro comm walk-behind, 15HP, w/sulkie, \$1,200. 689-2348, 778-4903.

**Scroll Saw** w/ stand, Ex-Calibur, 30" throat, \$300. 688-3791.

**Propane Heater**, BR50 Warm Morning, \$75. 688-3791.

**Monitor Heater**, MPI 41, drum, \$500. 910/395-6061 or 910/512-3897.

**Wet Station** w/ dryer chair, \$150. 688-1722 or 467-3085.

**Trailer** on ½ ac, gravity water, garage. 688-1722 or 467-3876 or 423/220-6712.

**Cargo Trailer**, Camp Out, 4x8, front supp wheel, title, \$1,500 OBO. 689-2884.

**Electric Kiln**, \$400 OBO. 682-7374 or 682-5298.

**Quilts**, hand-quilted. 682-7374.

**1990 Chevy Pickup**, 4WD, full size, ext cab. 688-4525.

**1972 Ford** 600 dump truck. 688-4525.

**Hay**, \$4/bale. 682-7268.

**Bed Frame**, Jenny Lind, \$65. 649-0059.

**2-story**, 1,700 sq ft house on 9.45 ac, sm greenhouse, \$159,000. 649-0059.

**Camera**, Vivitar VivicamX225, \$75. 682-2656.

**11 Acres** mtn land w/ 2 bldg sites, views, pvt access, \$8,500/ac. 656-2161.

**Pressure Washer**, Karcher, \$50. 768-6180.

**Sewing Machine**, Janome Model 3125, \$50. 768-6180.

**Faceting Machine**, Facette, best offer. 678-9346.

**2002 Harley Sportster** 1200, black, 5k mi, \$5,000. 284-9004.

**3.16 Acres**, water, septic, elect, ready to build, Cattail, \$60,000. 786/218-3249.

**Exerciser**, Orbitrek, \$150. 649-9818 after 3pm.

**Reading Aid**, macular degeneration Magni Site, \$850. 659-2490.

**Wood Stove**, \$200. 467-9570.

**Dinette Table** w/ 4 chairs, maple. 683-9169.

**Toy Horse Barn**, \$99. 398-1407.

**Hamster Items**, \$50. 398-1407.

**3 BR** trailer on 0.6 ac, Leicester, \$60,000. 683-5228.

**Chipper/Shredder**, \$300 OBO. 645-6140.

**Thermol Air Furnace**, 24000 BTU, \$100. 688-4161.

**Gas Range**, 4-burner, \$50. 688-4161.

**Truck Bed** w/ liner, no tailgate, Fleetside off 1993 S-10, \$150. 649-9708.

**Trees**, Frasier firs, \$25 ea. 649-2341.

**Steam/Dry Iron**, \$40. 683-8054.

**Quilt**, tulip appliqué, queen, \$450. 683-8054.

**Exercise Machine**, VPX 2000, \$800. 649-3642.

**Gemstones**. 675-5140.

**Barn Lumber** and beams. 682-6863 or 208-0295.

**Quarter Horse**, 5yr mare, bay w/ white face, gentle, \$600 OBO. 283-1090.

**Winter Clothes**. 675-4271.

**Quilts**, afghans, homemade. 675-4271.

**2000 Toyota Tundra**, auto, bedliner, 24k mi, 1 owner, \$4,500. 450-2724.

**Horse Trailer**, 1989, 4-horse, bumper pull, tack room, \$2,500. 319-7233.

**HP Copier**/scanner, printer, webcam, keyboard, mouse, \$50. 682-4941.

**Quilt**, king, heart pattern, red/green on white background, \$75. 688-2530.

**Lumber**, 700 bd ft, walnut, air dried, \$1,200 or \$2/bd ft. 423/743-4157.

**Sawmill**, 48" blade, 2 blades, edger mill, \$3,600. 649-2349.

**Gemstones**, uncut. 649-2349.

**Fifth-Wheel Trailer**, 1977, 35', 2 bunks, must move, \$1,997 OBO. 386/734-9151.

**Foot Bath** & massage, Brookstone TheraSpa, \$25. 206-9995.

**5 Acres**, wooded, Petersburg comm, house site, 18 ac avail, \$54,000. 206-9265.

**Kerosene Heater**, Dyna-Glo RMC-95-C6, \$70. 678-9346.

**1 Acre** mtn lot, view of Toe River, cabin site, owner fin. 284-3408.

**Guinea Pig**, female, 2 mo old, \$20. 284-6315.

**1974 MGB**, \$1,200. 626-3888.

### WANTED

**Junk Cars**, will pay cash. 689-5125.

**Old Buildings** to tear down. 682-6863 or 208-0295.

**Standing Timber**. 683-9874.

**Roommate** for larger home in Mars Hill, furn/unfurn. 768-1840.

**Rifles**, 22cal, older models, for parts, condition not important. 645-4639.

**46" Lever Control Deck** for 1996 Craftsman riding mower. 682-6330.

**Personal Polio Stories** for Rotary Club initiative to eradicate polio. 689-9451 or [rmolland@frontier.com](mailto:rmolland@frontier.com).

**Someone to tear down fence**. 689-4861.

**Someone to do lawncare** for winter. 689-4861.

**Camcorders** that no longer work, must be free. 689-9617.

**Bottom Land** for lease/rent for farming ministry in WNC. 776-6099.

**Firewood**, large dump truck load, hard wood logs. 242-1659.

**Storage Facility**. 273-8565.

### MISCELLANEOUS

**Will Haul Trash** for scrap metal. 545-0251.

**Will Babysit** or sit with elderly, ref. 284-6517.

**For Rent: 2BR/1BA**, bsmt, hardwood floors, cent H/A, lawn, \$650/mo+dep. 689-2871.

**Tabby Cat** needs a home, male, orange/white. 665-2362 or 213-1521.

**Computer Repair**, free est. 649-0317.

**Will clean**. 467-4776.

**For Rent: 2BR/2BA** house, furn, cent H/A, no smokers/pets, ref, \$800/mo+dep. 682-9612.

**FREE: Quilting Machine**, long arm, older model, you haul. 682-6846.

**For Rent: 2 BR/1 BA** 2-story apt, Burnsville, \$850/mo+dep. 682-9976.

**Caregiver** for weekends/holidays. 682-0467.

**FREE Oil Tank** w/ stand, must haul. 688-3371.

**Will Clean**. 680-9095.

**For Rent: 2BR/2BA** 14x70 mobile home on pvt lot, oil furn/cent air, ref, \$600/mo+dep. 680-9170 or 335-2910.

**For Rent:** mobile home lot, Marshall, \$125/mo/1<sup>st</sup>/last. 649-2433, 775-6534.

**Christmas Pageant**, Dec 2-3, 6:30pm, downtown Marshall.

**Will Bushhog**, plow, disk, for donations to farming ministry. 776-6099.

**For Rent: 2 BR** house on wooded lot near Mars Hill, \$475/mo. 680-9670.

**Fencing**, split rail, barbed wire, more. 284-1232.

**Chair Caning**. 689-5125.

**Will Clear Land**. 675-4003.

**Will Haul Mulch**, dirt, gravel. 675-4003.

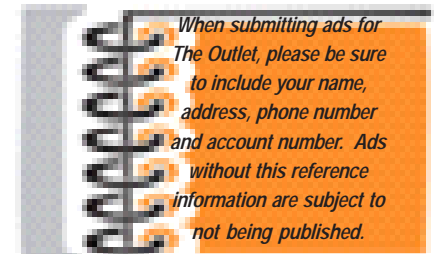
**For Rent: 2BR/1BA**, apt, part furn, Scronce Creek, ref, \$500/mo/dep. 689-2348, 778-1897.

**For Lease: Pasture**, Beech Glen, \$150/mo. 284-9004.

**4-H Wreath Sale**, handcrafted from locally grown Frasier fir, quantities limited, \$20. 649-2411.

**For Rent: 3 BR/2 BA** 1900's 2-story farmhouse, wrap porch, furn, \$650/mo. 284-3408.

**Cabinetry**, wood finishing. 675-8001.



Deadlines for submitting ads or notices to **The Electrifier**.

Dec. issue	Nov. 15
Jan. issue	Dec. 15
Feb. issue	Jan. 15